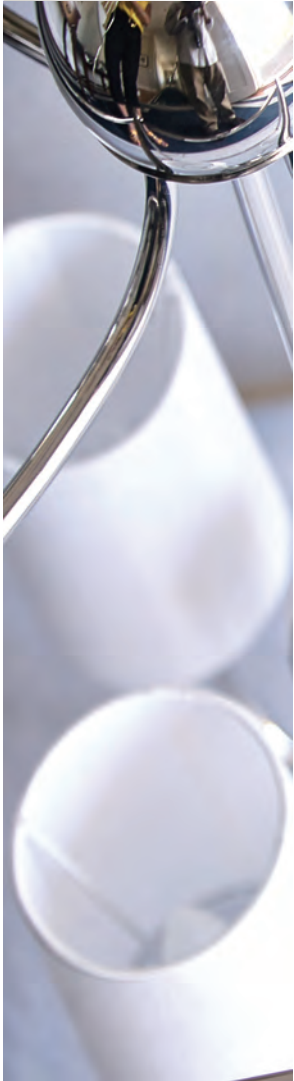
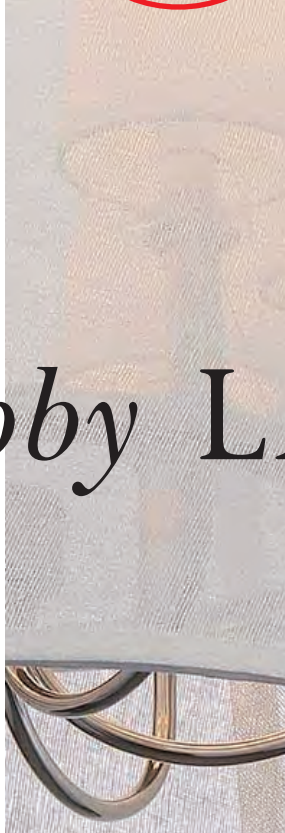


# CRYST RAMA



PRESENTING LIGHTING COLLECTIONS  
BY DESIGNER

*Libby* LANGDON



LIBBY LANGDON  
LIGHTING

FOR

CRYST RAMA



# CRYST

*Libby* LANGDON



*Lighting by  
Designer,  
Author  
and TV  
Personality  
Libby Langdon*

Libby is the creative force behind New York City based design firm Libby interiors, Inc. Her residential and commercial projects embody her easy, elegant, everyday style and reflect her signature look of combining classic lines with a chic, modern twist.

Libby's NBC TV show, *Daykeover with Libby Langdon*, is where she transforms her client's home from drab to fab in less than 12 hours while sharing her no-nonsense design tips. Her other TV makeovers have been featured on HGTV, the View, The Today Show and The Rachel Ray Show. Her first book, *Libby Langdon's Small Space Solutions*, offers innovative and inexpensive design ideas to help small space dwellers live large.

Since September 2014, Libby has become a monthly contributor with her own column in *House Beautiful* magazine.





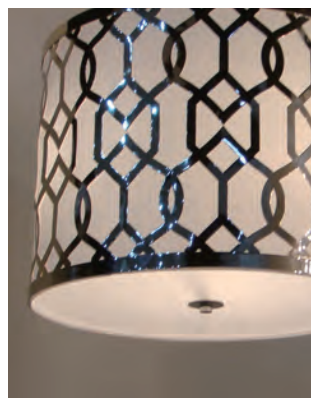
# RAMA

SINCE 1958

*Libby* LANGDON  
FOR CRYSTORAMA



Westwood Collection



Jennings Collection



Graham Collection



Sylvan Collection



Culver Collection



Masefield Collection

FOR THE LATEST NEWS, HAPPENINGS, PHOTOS, AND VIDEOS FOLLOW  
CRYSTORAMA ON TWITTER, INSTAGRAM, PINTEREST, FACEBOOK AND YOUTUBE.

crystorama.com





# *Libby* LANGDON

ON THE CULVER COLLECTION FOR CRYSTORAMA

*"As an interior designer, I love the Culver Collection. The open weave white linen outer shade is textural and sheer which helps filter the light and softens the inner polished nickel metalwork. It's almost like getting a sneak peek at something very beautiful: you can see it but it's just slightly masked. It's unexpected and so beautiful."*

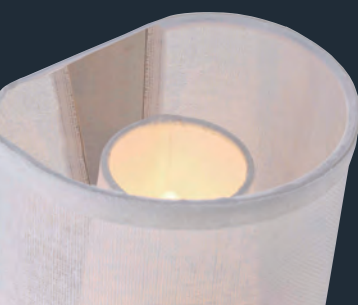


The Culver Collection is a great combination of materials. First you have the *shade within a shade* design. The soft elegance of an open weave linen fabric outside and a mini silk textile shade inside creates a whimsical shade within a shade theme. And mixing these soft fabric shades with the bling of the polished nickel metal can make a room feel much warmer and more inviting.



wall mount

A.



inside view



B.

# Culver Collection

SHADE WITHIN A SHADE

A. **2291-PN**  
1-60W/C 7"w x 13"h x 6¼"d  
Polished Nickel Finish

B. **2296-PN**  
6-60W/C 22"w x 23½"h  
Polished Nickel Finish





# *Libby* LANGDON

ON THE CULVER COLLECTION FOR CRYSTORAMA

The Culver Collection's use of mixed materials makes this series versatile. Not only do you have individual silk mini shades inside the larger linen drum shade, but you also have the sparkle of the clean polished nickel metal. These elements work together to create a wonderful and unexpected conversation.



**2294-PN**  
4-60W/C 15"w x 11½"h  
Polished Nickel Finish



Convertible to  
hanging or flush mount

**2293-PN**  
3-60W/C 16"w x 21½"h  
Polished Nickel Finish



**2290-PN**  
1-60W/M 7½"w x 10½"h  
Polished Nickel Finish



**2294-PN**  
4-60W/C 15"w x 11½"h  
Polished Nickel Finish



Convertible to  
hanging or flush mount





A.



B.

*wall mounts*



C.



D.

# Libby LANGDON

ON THE WESTWOOD COLLECTION FOR CRYSTORAMA

*"I wanted the Westwood Collection to have a sculptural feel, which is conveyed beautifully in the metal fretwork at the bottom of each fixture. It was also important to combine a diffused quality of light, which the angled shade achieves while adding softness at the same time".*

- A. 2257-PN 8-60W/C 42"l x 18"h x 15"d Polished Nickel Finish  
B. 2252-PN 2-60W/C 12"w x 13"h x 6"d Polished Nickel Finish  
C. 2251-PN 1-60W/C 5½"w x 13"h x 7½"d Polished Nickel Finish  
D. 2259-PN 6-60W/C 28"w x 25"h Polished Nickel Finish





**2256-PN**  
6-60W/C 24"w x 20"h  
Polished Nickel Finish



**2255-PN**  
5-60W/C 16"w x 13 1/4"h  
Polished Nickel Finish

Convertible to  
hanging or flush mount





# *Libby* LANGDON

"I truly believe design  
is in the details. An

element I love with the Westwood

collection is how the top loop mimics the  
same angle as the lower metal fretwork.

It's a small attention to detail but a big  
part of the overall look because it artfully  
repeats the design theme and helps to  
balance the fixture."

## **2254-PN**

4-60W/C 13½" w x 14¼" h  
Polished Nickel Finish

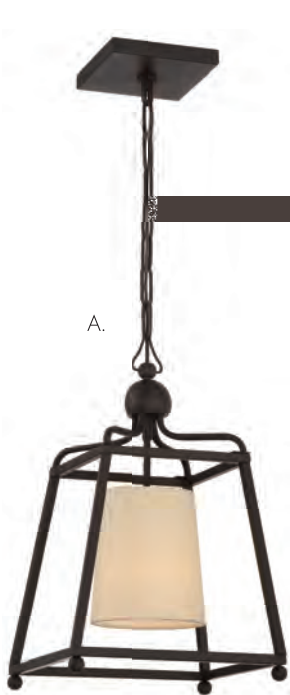


## **2255-PN**

5-60W/C 16" w x 13¼" h  
Polished Nickel Finish



Convertible to  
hanging or flush mount



A.



B.



C.



D.



A. **2240-DB**  
1-100W/M 11"w x 18¼"h  
Dark Bronze Finish

B. **2244-DB**  
4-60W/C 21½"w x 29¾"h  
Dark Bronze Finish

C. **2245-DB**  
4-60W/C 16"w x 21"h  
Dark Bronze Finish

D. **2248-DB**  
8-60W/C 27½"w x 40¾"h  
Dark Bronze Finish

Shades are included with fixture.





wall mount

**2242-DB**  
 260W/M 15½" w x 16" h x 7" d  
 Dark Bronze Finish





# Libby LANGDON

ON THE THE SYLVAN COLLECTION FOR CRYSTORAMA

The Sylvan Collection was created for homeowners who love lighting that is grand in scope but not clunky and oversized. The sleek lines and angular details of the outer Polished Nickel frame is softened by the white silk texture of the shades and the curved lines of the arms.



*Libby Langdon*

**A. 2242-PN**  
2-60W/C 15½"w x 16"h x 7"d  
Polished Nickel Finish

**B. 2244-PN**  
4-60W/C 21½"w x 29¾"h  
Polished Nickel Finish

**C. 2245-PN**  
4-60W/C 16"w x 21"h  
Polished Nickel Finish

**D. 2248-PN**  
8-60W/C 27½"w x 40¾"h  
Polished Nickel Finish

**E. 2240-PN**  
1-100W/M 11"w x 18¼"h  
Polished Nickel Finish

Shades are included with fixture.





## *Jennings Collections*

# EASY, ELEGANT, EVERYDAY STYLE.

The Jennings features Libby's timeless pattern that gives a graphic feel without overpowering a space. The white linen shade adds texture while the glass diffuser softens the light.

The Jennings is offered in five fixtures and two metals: The Aged Brass and the Polished Nickel, large, small and mini pendant, wall sconce and ceiling mount.



Ceiling Mount  
**2263-PN**  
3-60W/M 16 1/4" w x 8 3/4" h  
Polished Nickel Finish



Ceiling Mount  
**2263-AG**  
3-60W/M 16 1/4" w x 8 3/4" h  
Aged Brass Finish





*Libby*  
**LANGDON**  
 THE JENNINGS COLLECTION  
 FOR CRYSTORAMA



Pendant  
**2260-PN**  
 1-60W/M 6¼" w x 14¼" h  
 Polished Nickel Finish



Pendant  
**2260-AG**  
 1-60W/M 6¼" w x 14¼" h  
 Aged Brass Finish



Wall Mount  
**2262-PN**  
 1-60W/M 6½" w x 12" h x 4" d  
 Polished Nickel Finish



Wall Mount  
**2262-AG**  
 1-60W/M 6½" w x 12" h x 4" d  
 Aged Brass Finish





# Libby LANGDON

ON THE JENNINGS COLLECTION FOR CRYSTORAMA

*"As an interior designer a good lighting scheme is one of my most important tools in transforming a room. It's the best way to create a warm and inviting feel to every space."*





A. **2266-AG**  
5-100W/M 24¼" w x 17¾" h  
Aged Brass Finish

B. **2265-AG**  
3-100W/M 18¼" w x 14¾" h  
Aged Brass Finish

C. **2265-PN**  
3-100W/M 18¼" w x 14¾" h  
Polished Nickel Finish

D. **2266-PN**  
5-100W/M 24¼" w x 17¾" h  
Polished Nickel Finish







ceiling mount



**285-SA**

3-60W/M 15"w x 11"h Antique Silver Finish



pendant

**280-SA**

1-60W/M 6 1/2"w x 16"h Antique Silver Finish



wall mount

**281-SA**

2-60W/C 6 1/2"w x 14 1/4"h x 4 3/4"d Antique Silver Finish



**284-SA**

4-60W/C 16 1/2"w x 20"h Antique Silver Finish





# Libby LANGDON

ON THE GRAHAM COLLECTION FOR CRYSTORAMA

The magic of the Graham chandelier series is how beautiful the open circle framework looks and the light, airy feeling it evokes, it's just as stunning when you see it from below as it is when you see it head on. The light is subtly reflected on surfaces below in a chic interlocking circle pattern and the simple down rods allow the intricate metalwork to really shine.

A. **286-SA**  
6-60W/C 22½" w x 21¼" h  
Antique Silver Finish

B. **288-SA**  
8-60W/C 30" w x 29" h  
Antique Silver Finish

C. **284-SA**  
4-60W/C 16½" w x 20" h  
Antique Silver Finish

Shades are included with fixture.




"I wanted the Graham collection to have a dynamic feel and I thought the best way to do that was to create a design that uses a mix of angles and curves, combining design opposites in an artful, stylish way."









*"I designed the angular, sleek white inner linen shade to be smaller than the metal bamboo frame which allows the open space seem lighter - as if it is floating"*

**Libby LANGDON**

*Masefield*  
**COLLECTION**

**9017-SA**

6-60W/M 36"l x 13½"h x 16"d  
Antique Silver Finish







A. **9014-SA**  
460W/C 15"w x 19"h  
Antique Silver Finish

B. **9011-SA**  
160W/C 9"w x 24½"h  
Antique Silver Finish

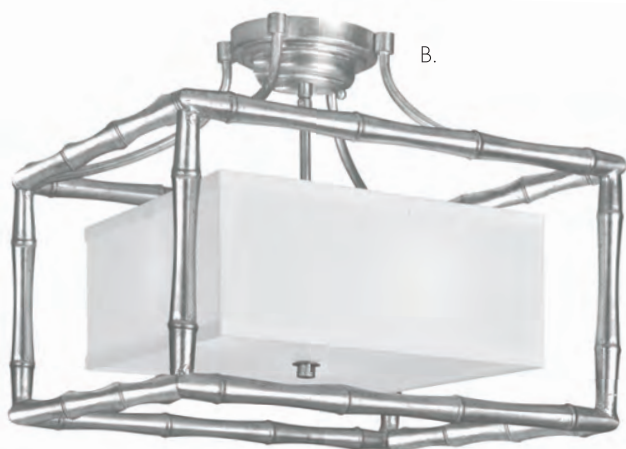
C. **9015-SA**  
460W/C 19"w x 24"h  
Antique Silver Finish

Flush Mount



A.

Semi Flush Mount



B.

Wall Mount



C.

# Libby LANGDON

ON THE MASEFIELD COLLECTION  
FOR CRYSTORAMA

*"The Antique Silver frame gains a fresh perspective on this timeless Masefield Collection. I find that bamboo can live beautifully in many different environments."*

**A. 9010-SA**

2-60W/C 11¼" w x 4¾" h  
Antique Silver Finish

**B. 9013-SA**

3-60W/C 16" w x 13" h  
Antique Silver Finish

**C. 9012-SA**

2-60W/C 12" w x 20" h x 6½" d  
Antique Silver Finish



# *index*

---

ITEM	PAGE	ITEM	PAGE	ITEM	PAGE
280	18/19	2252	6	2291	3
281	19	2254	9	2293	4/5
284	19/21	2255	8/9	2294	5
285	19	2256	8	2296	3
286	20/21	2257	6	9010	24
288	21	2259	7	9011	23
2240	10/13	2260	15	9012	24
2242	11/12	2262	15	9013	24
2244	10/11/13	2263	14	9014	23
2245	10/13	2265	17	9015	23
2248	10/13	2266	16/17	9017	22
2251	6	2290	5		

---

**[www.CRYSTORAMA.com](http://www.CRYSTORAMA.com)**

Phone: 800.888.4470

Fax: 516.931.1254

Email: [info@crystorama.com](mailto:info@crystorama.com)

Manufacturing Plant: 95 Cantiague Rock Road, Westbury, NY 11590





## CRYSTORAMA LIGHTING

New York Dallas High Point

[www.crystorama.com](http://www.crystorama.com) 1.800.888.4470 [info@crystorama.com](mailto:info@crystorama.com)

